



TODAY'S
MASTERS

BY MAX GILLIES

A TIME FOR TWO-SOMES

Many good things come in pairs, including human beings. Though being on your own is absolutely fine, many folks prefer to be part of a couple. That relationship is often romantic, but not necessarily, nor does it necessarily remain so throughout. Moreover, there are plenty of friends, siblings (especially twins), dance duos, and work colleagues who thrive in couple relationships that have no hint of romance at all. And this is not even including animals, who often pair off for various reasons.

Artists have long been intrigued by couples not only for their narrative potential (think *Romeo and Juliet*), but also because the body language of people who are just that comfortable with each other differs noticeably from other pairs'. As inveterate observers, artists get interested when they discern that distinction, and so we are glad to illustrate here an array of recent images revealing the almost infinite possibilities this timeless motif can evoke. ●



BURTON SILVERMAN (b. 1928), *Park Bench*, 2004, oil on linen, 32 x 50 in., private collection

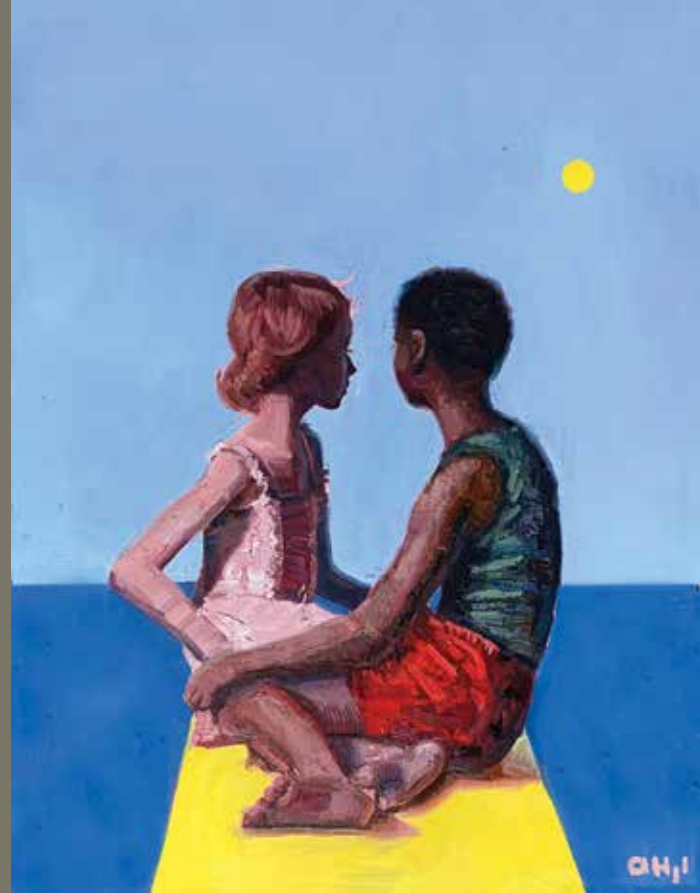
MAX GILLIES is a contributing writer to *Fine Art Connoisseur*.



(CLOCKWISE FROM TOP LEFT) JULIE BELL (b. 1958), *You and Me*, 2015, oil on wood, 42 x 35 in., American Legacy Fine Arts (Pasadena) ■ STEPHANIE DESHPANDE (b. 1975), *Conversations*, 2019, oil on linen, 30 x 24 in., available through the artist ■ BRENDA BOYLAN (b. 1962), *A Lite Lunch*, 2016, pastel on paper, 9 x 12 in., Illume Gallery of Fine Art (St. George, Utah) ■ SARA GALLAGHER (b. 1990), *Boundaries*, 2020, graphite on paper, 4 x 6 in., private collection ■ DAVID TANNER (b. 1969), *On the Mend*, 2013, oil on canvas, 24 x 24 in., private collection



(LEFT) MATTHEW BIRD (b. 1977), *Hidden Kiss*, 2017, watercolor on paper on ACM panel, 30 x 14 in., available through the artist ■ (TOP) AIDA GARRITY (b. 1957), *At the Museum*, 2017, oil on linen, 24 x 18 in., available through the artist ■ (ABOVE) JAQ GRANTFORD (b. 1967), *Sisters*, 2019, oil on canvas, 36 1/4 x 36 1/4 in., private collection



(LEFT) AARON HAZEL
(b. 1984), *Forward*, 2020,
oil on canvas, 40 x 30 in.,
Frame of Reference Fine Art
(Whitefish, Montana)



(RIGHT) ALEXANDRA
MANUKYAN (b. 1963),
Drift, 2020, oil on linen,
36 x 36 in., AnArte Gallery
(San Antonio)



(ABOVE) JESSE LANE
(b. 1990), *Undercurrents*,
2020, colored pencil
on board, 26 x 39 in.,
RJD Gallery (Romeo,
Michigan)

(LEFT) KIMBERLY DOW
(b. 1968), *Soft on Soft*, 2009,
oil on panel, 30 x 20 in.,
available through the artist

(RIGHT) KAREN HORNE
(b. 1959), *Tango Fire*, 2017,
pastel on La Carte panel,
16 x 12 in., Horne Fine Art,
Salt Lake City





(CLOCKWISE FROM TOP LEFT) JILL BANKS (b. 1958), *Among Royalty*, 2020, oil on linen-lined panel, 10 x 8 in., available through the artist ■ MARTIN EICHINGER (b. 1949), *Bird in the Hand*, 2006, bronze, 29 in. high or 46 in. high (editions of 75 and 100), Quent Cordair Fine Art (Jackson, Wyoming) ■ D.K. PALECEK (b. 1959), *Unspoken Bond*, 2021, oil on board, 16 x 12 in., Edgewood Orchard Galleries (Fish Creek, Wisconsin) ■ IVAN PAZLAMATCHEV (b. 1968), *Comfort*, 2020, oil on linen, 24 x 32 in., available through the artist



(ABOVE) CHRISTOPHER REMMERS (b. 1982), *Internal Unity #1*, 2020, oil on linen, 52 x 52 in., private collection (to be exhibited at Versailles this October) ■ (FAR LEFT) GARY ALSUM (b. 1957), *Sealed with a Kiss* (maquette for a life-size private commission now in a Virginia Beach park), 2007, bronze on walnut and stone base, 19 x 19 x 12 in., available through the artist ■ (LEFT) WILLIAM A. SCHNEIDER (b. 1945), *Olé*, 2008, oil on linen, 24 x 30 in., private collection



(CLOCKWISE FROM TOP LEFT) JOSEPH LORUSSO (b. 1966), *Smooching on the C Train*, 2017, oil on panel, 30 x 30 in., collection of the artist ■ DEBRA HUSE (b. 1959), *Day Dream*, 2020, oil on linen panel, 14 x 11 in., Huse Skelly Gallery (Newport Beach, California) ■ J. RUSSELL WELLS (b. 1954), *It's Over*, 2016, oil on canvas, 20 x 16 in., private collection ■ JACKIE EDWARDS (b. 1963), *Solidarity*, 2017, oil on linen mounted on wooden panel, 27 1/2 x 43 1/4 in., Gallery 1608 (Bushmills, Northern Ireland)



SHERRI WOLFGANG (b. 1961), *Chelsea Morning*, 2020, oil on linen, 48 x 60 in., Dacia Gallery (New York City)



SEONA SOMMER (b. 1968), *Bugsy H & SaSa*, 2021, oil on canvas, 39 1/4 x 27 1/2 in., available through the artist
